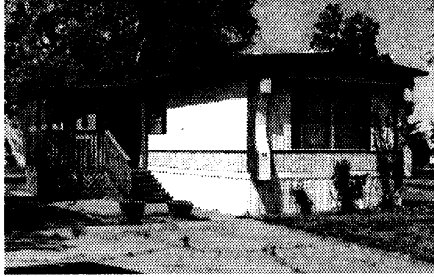


# ESTATE AUCTION

Friday, June 8, 2007 • 5:30 p.m.

Parkway Mobile Home Park Lot #34

777 E. YERBY, MARSHALL, MO



## TRAILER & HOUSEHOLD CONTENTS:

1979 GUER VIN  
#GGMHK S45786229  
Trailer: 2 Bedroom with covered deck. Roof on trailer recently replaced. Stove, refrigerator, washer & dryer stays with trailer. Trailer home in good repair and ready for occupancy.

Will be auctioned at 6:00 p.m. If buyer wishes to rent space from owner of trailer park will need to sign agreement with said owner according to terms and conditions of owner. To inspect trailer call 660-631-4518.

HOUSEHOLD: Sofa, recliner rocker, upholstered upright chair, wooden arm chair with padded cushions, coffee table, 2 end tables, Studio Standard by Fisher entertainment center, table lamps, floor lamp, twin bed, Dbl bed bookcase, headboard, matching chest and dresser, night stand, 4 drawer chest, Emerson 25" TV, dining table, repo glass front and sides china cabinet, oval formica top metal leg dining table and 4 chairs, game table (chess) with 2 chairs, square top occasional table with ball and claw feet, amber nesting hen, figurines, wall hangings, pictures, what-nots, dishes, pots and pans, sm. electric appliances, Tappan microwave, dirt devil upright sweeper, some lawn furniture.

## ESTATE OF JUANITA WHITNEY

Incapacitated and disabled

Saline County Administrator by Mary Toliver

## AUCTIONEERS

Col. Ron McCoy - 660-529-2518 Col. Gary Griffith - 660-859-2439

Professionalism with Integrity

rbmccoy@socket.net

ronmccoys-auction.com

**TERMS AND CONDITIONS:** Cash or Good Check with Proper ID day of Auction. Nothing Removed Until Settled For Seller and Auction Company. Not responsible for accidents or lost property. Any statement made day of auction takes precedence over all printed material.